



PROVEN ABSSSI* TREATMENT FOR YOUR AT-RISK PATIENTS

**Identify common patient types who can
benefit from KIMYRSA**

Not actual patients.

***INDICATION AND USAGE**

Both KIMYRSA[®] and ORBACTIV[®] are oritavancin products that are indicated for the treatment of adult patients with acute bacterial skin and skin structure infections (ABSSSI) caused or suspected to be caused by susceptible isolates of the following gram-positive microorganisms: *Staphylococcus aureus* (including methicillin-susceptible [MSSA] and methicillin-resistant [MRSA] isolates), *Streptococcus pyogenes*, *Streptococcus agalactiae*, *Streptococcus dysgalactiae*, *Streptococcus anginosus* group (includes *S. anginosus*, *S. intermedius*, and *S. constellatus*), and *Enterococcus faecalis* (vancomycin-susceptible isolates only).

IMPORTANT SAFETY INFORMATION

Contraindications

Use of intravenous unfractionated heparin sodium is contraindicated for 120 hours (5 days) after oritavancin administration because the activated partial thromboplastin time (aPTT) test results may remain falsely elevated for approximately 120 hours (5 days) after oritavancin administration.

Oritavancin products are contraindicated in patients with known hypersensitivity to oritavancin.

Please see additional Important Safety Information throughout and accompanying Prescribing Information.

GIVE THEM BACK THEIR DAYS

IDENTIFY AT-RISK ABSSSI PATIENTS

Certain patients may be at increased risk of treatment failure with multidose antibiotics¹⁻³

Single-dose antibiotic treatment can benefit many ABSSSI patients commonly seen in clinical practice, especially those with factors that increase the risk of treatment failure with multi-dose antibiotics.^{1,4-6}

A lack of clear guidelines for assessing risk in ABSSSI patients can result in hospital admissions and treatment failure. This suggests that it may be beneficial to identify and appropriately treat high-risk ABSSSI patients with a fast-acting, single-dose therapy to improve outcomes and reduce unnecessary hospitalizations.^{1-3,7}

Factors that can predispose ABSSSI patients to treatment failure and unnecessary hospitalization:



Diabetes

Impairment of peripheral blood flow to infection site increases the risk of treatment failure¹

~1 in 3 adults with diabetes will develop chronic kidney disease, a complicating factor for ABSSSI treatment^{3,8}



Renal impairment and obesity

Efficient therapeutic exposure may be difficult to achieve, increasing the likelihood of treatment failure³

Additional monitoring may be required with multidose IV antibiotics³



Vascular disease or congestive heart disease

Vascular compromise can lead to greater difficulty in healing and tissue regeneration following ABSSSI⁹

IMPORTANT SAFETY INFORMATION (cont)

Warnings and Precautions

Coagulation test interference: Oritavancin has been shown to artificially prolong aPTT for up to 120 hours, and may prolong PT and INR for up to 12 hours and ACT for up to 24 hours. Oritavancin has also been shown to elevate D-dimer concentrations up to 72 hours. For patients who require aPTT monitoring within 120 hours of oritavancin dosing, consider a non-phospholipid dependent coagulation test such as a Factor Xa (chromogenic) assay or an alternative anticoagulant not requiring aPTT.



Advanced age

ABSSSI MRSA hospitalization is high in those 65+, likely due to increased comorbidities and/or diminished immune function⁷

Multi-dose IV therapy at an infusion center may be challenging for those who lack transportation options^{2,6,10}

Outpatient treatment is preferred, as hospitalization increases the risk of falls, pressure ulcers, nosocomial infections, and delirium in elderly patients¹¹



IV drug use

Ongoing IV drug use is both a risk factor for ABSSSI and a concern for patient compliance to an antibiotic regimen⁷

Use of PICC lines can lead to line infections, vascular access complications, and increased risk of rehospitalization for those discharged with OPAT¹²⁻¹⁴

Treat your ABSSSI patients with a single-dose antibiotic shown to help them avoid hospitalization and shorten LOS.



IV=intravenous; LOS=length of stay; MRSA=methicillin-resistant *Staphylococcus aureus*; OPAT=outpatient parenteral antimicrobial therapy; PICC=peripherally inserted central catheter.

Please see additional Important Safety Information throughout and accompanying Prescribing Information.

KimyrsaTM
(oritavancin) for injection
1200 mg

Due to their nature, retrospective studies can contain material limitations and their results should be considered in light of the entire body of available evidence, including clinical trial data.

BREAK THE CYCLE OF ABSSSI ADMISSIONS WITH KIMYRSA

How oritavancin can benefit your at-risk patients

The efficacy and 1-dose administration of KIMYRSA® (oritavancin) can benefit a broad range of patient types, with specific product attributes being of particular benefit to patients at higher risk of treatment failure.^{2,6,10-17}

Risk factor	Oritavancin benefit
<ul style="list-style-type: none">• Diabetes¹⁵• Obesity¹⁵• Vascular disorders¹⁵	<ul style="list-style-type: none">• 93% clinical success across all patients in a real-world study including a significant number of participants with comorbidities^{15*}• Optional saline dilution and low 250-mL dosing¹⁶
<ul style="list-style-type: none">• Mild to moderate renal impairment¹⁶	<ul style="list-style-type: none">• A full course of therapy in one infusion with no monitoring or dosing adjustments¹⁶
<ul style="list-style-type: none">• Advanced age^{2,6,7,10}	<ul style="list-style-type: none">• A single-dose course of therapy to ensure adherence with no dose adjustment for age¹⁶• Demonstrated efficacy in MRSA¹⁷• Outpatient treatment to avoid risks associated with hospitalization^{10,11}• 93% clinical success across all patients in a real-world study in which nearly half of all 112 participants were ≥65^{15†}
<ul style="list-style-type: none">• IV drug use^{7,12-14}	<ul style="list-style-type: none">• Efficacy comparable to vancomycin in the Phase 3 SOLO trials, in which a third of patients were IV drug users^{18‡}• A single-dose course of therapy to ensure adherence¹⁶• Freedom from PICC lines⁶

*Proportion of study population with comorbidities: diabetes, 37.5%; obesity, 30%; vascular disorders, 55.4%.¹⁵

†Proportion of study population ≥65 years of age: 39.3%.¹⁵

‡Early clinical response rates: 84.5% (n=218) vs 82.6% (n=214).¹⁸

IMPORTANT SAFETY INFORMATION (cont)

Warnings and Precautions (cont)

Serious hypersensitivity reactions, including anaphylaxis, have been reported with the use of oritavancin products. Discontinue infusion if signs of acute hypersensitivity occur. Closely monitor patients with known hypersensitivity to glycopeptides.

Please see additional Important Safety Information throughout and accompanying Prescribing Information.

1-dose oritavancin helps keep appropriate patients out of the hospital

Avoid hospital admissions^{10,15,19,20}



AVOIDED HOSPITALIZATION
when treated in an outpatient setting in 2 real-world studies.^{15,19‡}

Prescribe in any convenient outpatient setting with no PICC line^{10,15,20}

- **In the hospital**
 - ED
 - Hospital infusion center
 - Observation Unit
- **Outside the hospital**
 - Freestanding infusion center
 - Physician's office
 - Patients home

Shorten hospital stays²¹



≥2 DAY REDUCTION
in LOS with discharge to an outpatient infusion center or the patient's home[§]

Reduce readmissions^{15,19,22,23}



Consistently low infection-related 30-day readmission rates of 0%-3.5%^{||}

Choose KIMYRSA to help patients achieve clinical cure and reduce unnecessary hospitalizations.

‡Results from 2 retrospective, real-world studies of a combined 227 patients treated in the ED, outpatient infusion center, or hospital-based infusion center.^{15,19}

§Results from a real-world, retrospective, descriptive cohort study of 199 patients.²¹

||Results from 4 distinct retrospective studies comprised of a combined 611 patients.^{15,19,22,23}

ED=emergency department.

Please see additional Important Safety Information throughout and accompanying Prescribing Information.

Kimyrsa™
(oritavancin) for injection
1,200 mg

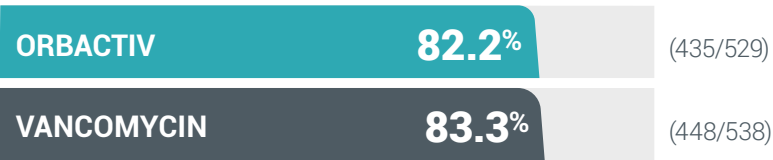
CLINICAL EFFICACY AND SAFETY

Proven clinical efficacy vs vancomycin¹⁷

The efficacy of KIMYRSA® (oritavancin) has been established from adequate and well-controlled trials of another oritavancin product, ORBACTIV® (oritavancin), in patients with ABSSSI.

In the SOLO I and SOLO II clinical trials, oritavancin demonstrated efficacy comparable to vancomycin^{17*}

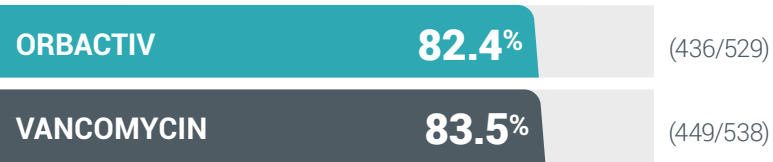
Primary endpoint: Early clinical response rates at 48 to 72 hours[†]



Secondary endpoint: Reduction in lesion size at 48 to 72 hours[‡]



Secondary endpoint: Clinical success rates at days 14 to 24[§]



Study design: 2 global, multicenter, randomized, double-blind studies comparing the efficacy, safety, and noninferiority of single-dose intravenous ORBACTIV® vs intravenous vancomycin for 7 to 10 days in 1,959 adults with ABSSSIs (oritavancin, 978; vancomycin, 981)¹⁷

*Whereas the modified intent-to-treat (mITT) population included all randomized patients who received any study drug and was used to determine the primary efficacy endpoint in each study, the main patient population for these analyses was the mITT population, which consisted of the subset of patients within the mITT population with baseline gram-positive pathogen(s) known to cause ABSSSI.¹⁷

[†]Early clinical response defined as a composite of the cessation of spread or reduction in size of baseline lesion, absence of fever, and no rescue antibacterial drug at 48 to 72 hours.¹⁷

[‡]Patients achieving a ≥20% reduction in lesion area from baseline at 48 to 72 hours after initiation of therapy.¹⁷

[§]Investigator-assessed clinical success at days 14 to 24, defined as complete or nearly complete resolution of baseline signs and symptoms related to the primary ABSSSI site such that no further treatment with antibacterial drugs was needed.¹⁷



The safety of KIMYRSA® has been established from the adequate and well-controlled trials of another oritavancin product, ORBACTIV®, in patients with ABSSSI, and a PK study of KIMYRSA in patients with ABSSSI.^{15,16,24}

PK=pharmacokinetics.

IMPORTANT SAFETY INFORMATION (cont)

Warnings and Precautions (cont)

Infusion related reactions: Infusion reactions characterized by chest pain, back pain, chills and tremor have been observed with the use of oritavancin products, including after the administration of more than one dose of oritavancin during a single course of therapy. Stopping or slowing the infusion may result in cessation of these reactions.

Please see additional Important Safety Information throughout and accompanying Prescribing Information.

Kimyrsa[™]
(oritavancin) for injection
1,200 mg

INDICATION AND USAGE

Both KIMYRSA® and ORBACTIV® are oritavancin products that are indicated for the treatment of adult patients with acute bacterial skin and skin structure infections (ABSSSI) caused or suspected to be caused by susceptible isolates of the following gram-positive microorganisms: *Staphylococcus aureus* (including methicillin-susceptible [MSSA] and methicillin-resistant [MRSA] isolates), *Streptococcus pyogenes*, *Streptococcus agalactiae*, *Streptococcus dysgalactiae*, *Streptococcus anginosus* group (includes *S. anginosus*, *S. intermedius*, and *S. constellatus*), and *Enterococcus faecalis* (vancomycin-susceptible isolates only).

To reduce the development of drug-resistant bacteria and maintain the effectiveness of oritavancin and other antibacterial drugs, oritavancin should be used only to treat or prevent infections that are proven or strongly suspected to be caused by susceptible bacteria.

KIMYRSA® and ORBACTIV® are not approved for combination use and have differences in dose strength, duration of infusion, and preparation instructions, including reconstitution and dilution instructions and compatible diluents. Please see the full Prescribing Information for each product.

IMPORTANT SAFETY INFORMATION (cont)

Warnings and Precautions (cont)

Clostridioides difficile-associated diarrhea: Evaluate patients if diarrhea occurs.

Concomitant warfarin use: Oritavancin has been shown to artificially prolong PT/INR for up to 12 hours. Patients should be monitored for bleeding if concomitantly receiving oritavancin products and warfarin.

Osteomyelitis: Institute appropriate alternate antibacterial therapy in patients with confirmed or suspected osteomyelitis.

Prescribing oritavancin products in the absence of a proven or strongly suspected bacterial infection or a prophylactic indication is unlikely to provide benefit to the patient and increases the risk of development of drug-resistant bacteria.

References: 1. Dryden M, Baguneid M, Eckmann C, et al. Pathophysiology and burden of infection in patients with diabetes mellitus and peripheral vascular disease: focus on skin and soft-tissue infections. *Clin Microbiol Infect.* 2015;21(suppl 2):S27-S32. doi:10.1016/j.cmi.2015.03.024 2. Jin J, Sklar GE, Min Sen Oh V, Chuen Li S. Factors affecting therapeutic compliance: a review from the patient's perspective. *Ther Clin Risk Manag.* 2008;4(1):269-286. doi:10.2147/tcrm.s1458 3. Pulido-Cejudo A, Guzmán-Gutiérrez M, Jalife-Montaña A, et al. Management of acute bacterial skin and skin structure infections with a focus on patients at high risk of treatment failure. 2017;4(5):143-161. doi:10.1177/2049936117723228 4. Deck DH, Jordan JM, Holland TL, et al. Single-dose oritavancin treatment of acute bacterial skin and skin structure infections: SOLO trial efficacy by Eron severity and management setting. *Infect Dis Ther.* 2016;5(3):353-361. doi:10.1007/s40121-016-0119-9 5. Eron LJ, Lipsky BA, Low DE, et al. Managing skin and soft tissue infections: expert panel recommendations on key decision points. *J Antimicrob Chemother.* 2003;52(suppl 1):i3-i17. doi:10.1093/jac/dkg466 6. Dretske D, Schulz L, Werner E, Sharp B, Pulia M. Effectiveness of oritavancin for management of skin and soft tissue infections in the emergency department: a case series. *Am J Emerg Med.* 2021;43:77-80. doi:10.1016/j.ajem.2021.01.050 7. Pollack CV, Amin A, Ford WT, et al. Acute bacterial skin and skin structure infections (ABSSSI): practice guidelines for management and care transitions in the emergency department and hospital. *J Emerg Med.* 2015;48(4):508-519. doi:10.1016/j.jemermed.2014.12.001 8. Diabetes and chronic kidney disease. Centers for Disease Control and Prevention. Updated December 30, 2022. Accessed October 19, 2023. <https://www.cdc.gov/diabetes/managing/diabetes-kidney-disease.html> 9. Macia-Rodríguez C, Alende-Castro V, Vazquez-Ledo L, et al. Skin and soft-tissue infections: factors associated with mortality and re-admissions. *Enferm Infecc Microbiol Clin.* 2016;35(2):76-81. doi:10.1016/j.eimc.2016.02.030 10. Lodise T, Redell M, Armstrong S, Sulham K, Corey G. Efficacy and safety of oritavancin relative to vancomycin for patients with acute bacterial skin and skin structure infections (ABSSSI) in the outpatient setting: results from the SOLO clinical trials. *Open Forum Infect Dis.* 2017;4(1):ofw274. doi:10.1093/ofid/ofw274 11. Falcone M, Tiseo G. Skin and soft tissue infections in the elderly. *Curr Opin Infect Dis.* 2023;36(2):102-108. doi:10.1097/QCO.0000000000000907 12. Shrestha NK, Shrestha J, Everett A, et al. Vascular access complications during outpatient parenteral antimicrobial therapy at home: a retrospective cohort study. *J Antimicrob Chemother.* 2016;71(12):506-512. doi:10.1093/jac/dkv344 13. D'Couto HT, Robbins GK, Ard KL. Outcomes according to discharge location for persons who inject drugs receiving outpatient parenteral antimicrobial therapy. *Open Forum Infect Dis.* 2018;5(5):ofy056. doi:10.1093/ofid/ofy056 14. Suzuki J, Johnson J, Montgomery M, Hayden M, Price C. Outpatient parenteral antimicrobial therapy among people who inject drugs: a review of the literature. *Open Forum Infect Dis.* 2018;5(9):ofy194. doi:10.1093/ofid/ofy194 15. Redell M, Moeck G, Lucasti C, et al. A real-world patient registry for oritavancin demonstrates efficacy and safety consistent with the phase 3 SOLO program. *Open Forum Infect Dis.* 2018;5(6):ofy051. doi:10.1093/ofid/ofy051 16. Kimyrsa. Package insert. Melinta Therapeutics; 2021. 17. Corey G, Arhin F, Wikler MA, et al. Pooled analysis of single-dose oritavancin in the treatment of acute bacterial skin and skin-structure infections caused by gram-positive pathogens, including a large patient subset with methicillin-resistant *Staphylococcus aureus*. *Int J Antimicrob Agents.* 2016;48(5):528-534. doi:10.1016/j.ijantimicag.2016.07.019 18. Pollack CV, Good S, Wikler M. Single-dose oritavancin treatment of acute bacterial skin and skin structure infections in intravenous drug users: results from SOLO trials. *Ann Emerg Med.* 2015;66(4S):S2. doi:10.1016/j.annemergmed.2015.07.032 19. Estrada S, Lodise TP, Tillotson GS, et al. The real world economic and clinical management of adult patients with skin and soft tissue infections (SSTIs) with oritavancin: data from two multicenter observational cohort studies. *Drugs Real World Outcomes.* 2020;7(suppl 1):6-12. doi:10.1007/s40801-020-00199-3 20. Helton B, MacWhinnie A, Minor SB, et al. Early directed oritavancin therapy in the emergency department may lead to hospital avoidance compared to standard treatment for acute bacterial skin and skin structure infections: a real-world retrospective analysis. *Drugs Real World Outcomes.* 2020;7(suppl 1):20-29. doi:10.1007/s40801-020-00201-y 21. Whittaker C, Lodise TP, Nhan E, Reilly J. Expediting discharge in hospitalized, adult patients with skin and soft tissue infections who received empiric vancomycin therapy with oritavancin: description of findings from an institutional pathway. *Drugs Real World Outcomes.* 2020;7(suppl 1):30-35. doi:10.1007/s40801-020-00196-6 22. Anastasio PJ, Wolthoff P, Galli A, Fan W. Single-dose oritavancin compared to standard of care IV antibiotics for acute bacterial skin and skin structure infection in the outpatient setting: a retrospective real-world study. *Infect Dis Ther.* 2017;6(1):115-128. doi:10.1007/s40121-016-0145-7 23. Turner E, Estrada S, Galli A, Armstrong S, Delaportas D. Treatment of acute bacterial skin and skin structure infections (ABSSSI) in the outpatient setting: clinical and economic outcomes from a real-world multi-center study of oritavancin. Poster presented at: ASHP Conference for Pharmacy Leaders; October 17-18, 2016; Chicago, IL. 24. Heo Y. Oritavancin (KIMYRSA™) in acute bacterial skin and skin structure infections: a profile of its use in the USA. *Drugs & Ther Pers.* 2022;38:57-63. doi:10.1007/s40267-021-00888-1

Please see additional Important Safety Information throughout and accompanying Prescribing Information.

Kimyrsa™
(oritavancin) for injection
1,200 mg

Cure ABSSSI with 1-dose KIMYRSA^{15,16}



Patients with comorbidities may be at increased risk of treatment failure with multidose antibiotics¹⁻³



1-dose oritavancin demonstrates clinical success, even for patients at high risk for treatment failure^{15,16}



A full course of therapy in 1 hour without a PICC line ensures adherence, which can improve patient outcomes^{6,16}



**LEARN MORE AT
KIMYRSA.COM**

IMPORTANT SAFETY INFORMATION (cont)

Adverse Reactions

The most common adverse reactions ($\geq 3\%$) in patients treated with oritavancin products were headache, nausea, vomiting, limb and subcutaneous abscesses, and diarrhea. The adverse reactions occurring in ≥ 2 patients receiving KIMYRSA[®] were hypersensitivity, pruritus, chills and pyrexia.

Please see additional Important Safety Information throughout and accompanying Prescribing Information.



Kimyrsa[™]
(oritavancin) for injection
1,200 mg

©2024 Melinta Therapeutics, LLC
All rights reserved. 02/2024

PP-KIM-US-0295

GIVE THEM BACK THEIR DAYS

HIGHLIGHTS OF PRESCRIBING INFORMATION

These highlights do not include all the information needed to use KIMYRSA safely and effectively. See full prescribing information for KIMYRSA.

KIMYRSA™ (oritavancin) for injection, for intravenous use
Initial U.S. Approval: 2014

INDICATIONS AND USAGE

KIMYRSA is a lipoglycopeptide antibacterial drug indicated for the treatment of adult patients with acute bacterial skin and skin structure infections caused or suspected to be caused by susceptible isolates of designated Gram-positive microorganisms. (1.1)

To reduce the development of drug-resistant bacteria and maintain the effectiveness of KIMYRSA and other antibacterial drugs, KIMYRSA should be used only to treat or prevent infections that are proven or strongly suspected to be caused by bacteria. (1.2)

DOSAGE AND ADMINISTRATION

- There are two oritavancin products (KIMYRSA and ORBACTIV®, another oritavancin product) that have differences in dose strength, duration of infusion and preparation instructions, including reconstitution and dilution instructions and compatible diluents (2.1, 2.2, 2.3, 2.4)
- Administer 1,200 mg of KIMYRSA as a single dose by intravenous infusion over 1 hour. (2.1, 5.3)
- Carefully follow the recommended dosage and dose preparation instructions for KIMYRSA in the full prescribing information. (2.1, 2.2, 2.3)

DOSAGE FORMS AND STRENGTHS

For injection: 1,200 mg of lyophilized powder in a single-dose vial for reconstitution. (3)

CONTRAINDICATIONS

- Use of intravenous unfractionated heparin sodium is contraindicated for 120 hours (5 days) after KIMYRSA administration. (4.1, 5.1)
- Known hypersensitivity to oritavancin products. (4.2, 5.2)

WARNINGS AND PRECAUTIONS

- Coagulation test interference: Oritavancin has been shown to artificially prolong aPTT for up to 120 hours, and may prolong PT and INR for up to 12 hours and ACT for up to 24 hours. For patients who require aPTT monitoring within 120 hours of KIMYRSA dosing, consider a non-phospholipid dependent coagulation test such as a Factor Xa (chromogenic) assay or an alternative anticoagulant not requiring aPTT. (5.1, 7.2)
- Serious hypersensitivity reactions, including anaphylaxis, have been reported with the use of oritavancin products, including KIMYRSA. Discontinue infusion if signs of acute hypersensitivity occur. Carefully monitor patients with known hypersensitivity to glycopeptides. (5.2)
- Infusion Related Reactions: Infusion related reactions have been reported with the glycopeptide class of antimicrobial agents, including oritavancin products (e.g. KIMYRSA). Stopping or slowing the infusion may result in cessation of these reactions. (5.3)
- *Clostridioides difficile*-associated diarrhea: Evaluate patients if diarrhea occurs. (5.4)
- Concomitant warfarin use: Oritavancin has been shown to artificially prolong PT/INR for up to 12 hours (5.1). Patients should be monitored for bleeding if concomitantly receiving KIMYRSA and warfarin. (5.5)
- Osteomyelitis: Institute appropriate alternate antibacterial therapy in patients with confirmed or suspected osteomyelitis. (5.6)

ADVERSE REACTIONS

The most common adverse reactions (≥3%) in patients treated with oritavancin products were headache, nausea, vomiting, limb and subcutaneous abscesses, and diarrhea. The adverse reactions occurring in ≥2 patients receiving KIMYRSA were hypersensitivity, pruritus, chills and pyrexia. (6.1)

To report SUSPECTED ADVERSE REACTIONS, contact Melinta Therapeutics at 1-844-633-6568 or FDA at 1-800-FDA-1088 or www.fda.gov/medwatch.

See 17 for PATIENT COUNSELING INFORMATION

Revised: 7/2021

FULL PRESCRIBING INFORMATION: CONTENTS*

1	INDICATIONS AND USAGE	7.1	Effect of KIMYRSA on CYP Substrates
1.1	Acute Bacterial Skin and Skin Structure Infections	7.2	Drug-Laboratory Test Interactions
1.2	Usage	8	USE IN SPECIFIC POPULATIONS
2	DOSAGE AND ADMINISTRATION	8.1	Pregnancy
2.1	Dosage and Administration Overview	8.2	Lactation
2.2	Recommended Dosage	8.4	Pediatric Use
2.3	Preparation of KIMYRSA for Intravenous Infusion	8.5	Geriatric Use
2.4	Compatibilities	8.6	Renal Impairment
2.5	Incompatibilities	8.7	Hepatic Impairment
3	DOSAGE FORMS AND STRENGTHS	10	OVERDOSAGE
4	CONTRAINDICATIONS	11	DESCRIPTION
4.1	Intravenous Unfractionated Heparin Sodium	12	CLINICAL PHARMACOLOGY
4.2	Hypersensitivity	12.1	Mechanism of Action
5	WARNINGS AND PRECAUTIONS	12.2	Pharmacodynamics
5.1	Coagulation Test Interference	12.3	Pharmacokinetics
5.2	Hypersensitivity	12.4	Microbiology
5.3	Infusion Related Reactions	13	NONCLINICAL TOXICOLOGY
5.4	<i>Clostridioides difficile</i> -associated Diarrhea	13.1	Carcinogenesis, Mutagenesis, Impairment of Fertility
5.5	Potential Risk of Bleeding with Concomitant Use of Warfarin	14	CLINICAL STUDIES
5.6	Osteomyelitis	14.1	Acute Bacterial Skin and Skin Structure Infections (ABSSSI)
5.7	Development of Drug Resistant Bacteria	16	HOW SUPPLIED/STORAGE AND HANDLING
6	ADVERSE REACTIONS	16.1	How Supplied/Storage
6.1	Clinical Trials Experience	17	PATIENT COUNSELING INFORMATION
6.2	Immunogenicity		
7	DRUG INTERACTIONS		

*Sections or subsections omitted from the full prescribing information are not listed.

FULL PRESCRIBING INFORMATION

1 INDICATIONS AND USAGE

1.1 Acute Bacterial Skin and Skin Structure Infections

KIMYRSA™ is indicated for the treatment of adult patients with acute bacterial skin and skin structure infections (ABSSSI) caused by susceptible isolates of the following Gram-positive microorganisms:

Staphylococcus aureus (including methicillin-susceptible and methicillin-resistant isolates), *Streptococcus pyogenes*, *Streptococcus agalactiae*, *Streptococcus dysgalactiae*, *Streptococcus anginosus* group (includes *S. anginosus*, *S. intermedius*, and *S. constellatus*), and *Enterococcus faecalis* (vancomycin-susceptible isolates only).

1.2 Usage

To reduce the development of drug-resistant bacteria and maintain the effectiveness of KIMYRSA and other antibacterial drugs, KIMYRSA should be used only to treat or prevent infections that are proven or strongly suspected to be caused by susceptible bacteria. When culture and susceptibility information are available, they should be considered in selecting or modifying antibacterial therapy. In the absence of such data, local epidemiology and susceptibility patterns may contribute to the empiric selection of therapy.

2 DOSAGE AND ADMINISTRATION

2.1 Dosage and Administration Overview

There are two oritavancin products (KIMYRSA and ORBACTIV®, another oritavancin product) that:

- Are supplied in different dose strengths of oritavancin [see *Dosage Forms and Strengths* (3)].
- Have different recommended durations of infusion [see *Dosage and Administration* (2.2)].
- Have different preparation instructions, including differences in reconstitution, dilution, and compatible diluents [see *Dosage and Administration* (2.3, 2.4)].

Carefully follow the recommended dosage and dose preparation instructions for KIMYRSA in this prescribing information (PI) [see *Dosage and Administration* (2.1, 2.2, 2.3, 2.4)]. Refer to the ORBACTIV prescribing information for relevant information of the other oritavancin product.

2.2 Recommended Dosage

The recommended dosage of KIMYRSA is 1,200 mg administered as a single dose by intravenous infusion over **1** hour in patients 18 years and older [*see Warnings and Precautions (5.3)*].

2.3 Preparation of KIMYRSA for Intravenous Infusion

There are two oritavancin products (KIMYRSA and ORBACTIV, another oritavancin product) that have differences in dose strengths, duration of infusion, reconstitution and dilution instructions, and compatible diluents. Carefully follow the reconstitution, and dilution instructions with the appropriate compatible diluent for KIMYRSA specified in this prescribing information. Refer to the ORBACTIV prescribing information for relevant information of the other oritavancin product.

KIMYRSA is intended for intravenous infusion, only after reconstitution and dilution.

One KIMYRSA 1,200 mg single-dose vial needs to be reconstituted and diluted to prepare a single 1,200 mg intravenous dose.

Reconstitution: Aseptic technique should be used to reconstitute one KIMYRSA 1,200 mg vial.

- Add 40 mL of sterile water for injection (WFI) to reconstitute the vial to provide a 30 mg/mL solution.
- Gently swirl the contents to avoid foaming and ensure that all KIMYRSA powder is completely dissolved to form a reconstituted solution.
- Parenteral drug products should be inspected visually for particulate matter and discoloration prior to administration, whenever solution and container permit. The reconstituted vial should appear to be a clear, colorless to pink solution, free of visible particles.

Dilution: Use **0.9% sodium chloride injection or 5% dextrose in sterile water (D5W)** for dilution to prepare the final intravenous solution for infusion. Since no preservative or bacteriostatic agent is present in KIMYRSA, aseptic technique must be used in preparing the final intravenous solution as follows:

- Withdraw and discard **40** mL from a **250** mL intravenous bag of 0.9% sodium chloride injection **or** D5W.
- Withdraw 40 mL of the reconstituted vial of KIMYRSA and add to the intravenous bag of 0.9% sodium chloride injection **or** D5W to bring the bag volume to **250** mL. This yields a concentration of 4.8 mg/mL.

Discard any unused portion of the reconstituted solution remaining in the vial.

Storage and Use of Intravenous Solution: Diluted intravenous solution in an infusion bag should be used within **4 hours** when stored at room temperature, or used within 12 hours when refrigerated at 2 to 8°C (36 to 46°F). The combined storage time (reconstituted solution in the vial and diluted solution in the bag) and 1 hour infusion time should not exceed **4 hours** at room temperature or 12 hours if refrigerated.

2.4 **Compatibilities**

KIMYRSA solution for administration **by 1-hour** infusion is compatible with:

- 0.9% sodium chloride injection
- 5% dextrose in sterile water (D5W)

2.5 **Incompatibilities**

Drugs formulated at a basic or neutral pH may be incompatible with KIMYRSA. KIMYRSA should not be administered simultaneously with commonly used intravenous drugs through a common intravenous port. If the same intravenous line is used for sequential infusion of additional medications, the line should be flushed before and after infusion of KIMYRSA with 0.9% sodium chloride injection **or** D5W.

3 **DOSAGE FORMS AND STRENGTHS**

KIMYRSA is supplied as sterile, white to off-white or pink lyophilized powder containing 1,200 mg of oritavancin (as oritavancin diphosphate) in a single-dose clear glass vial, which must be reconstituted and further diluted prior to intravenous administration.

4 **CONTRAINDICATIONS**

4.1 **Intravenous Unfractionated Heparin Sodium**

Use of intravenous unfractionated heparin sodium is contraindicated for 120 hours (5 days) after KIMYRSA administration because the activated partial thromboplastin time (aPTT) test results may remain falsely elevated for up to 120 hours (5 days) after KIMYRSA administration [*see Warnings and Precautions (5.1) and Drug Interactions (7.2)*].

4.2 **Hypersensitivity**

KIMYRSA is contraindicated in patients with known hypersensitivity to oritavancin products.

5 **WARNINGS AND PRECAUTIONS**

5.1 **Coagulation Test Interference**

Oritavancin has been shown to artificially prolong aPTT for up to 120 hours, PT and INR for up to 12 hours, and activated clotting time (ACT) for up to 24 hours following administration of a single 1,200 mg dose by binding to and preventing action of the phospholipid reagents commonly used in laboratory coagulation tests. Oritavancin has also been shown to elevate D-dimer concentrations up to 72 hours after oritavancin administration.

For patients who require aPTT monitoring within 120 hours of KIMYRSA dosing, a non-phospholipid dependent coagulation test such as a Factor Xa (chromogenic) assay or an

alternative anticoagulant not requiring aPTT monitoring may be considered [see *Contraindications (4.1)* and *Drug Interactions (7.2)*].

Oritavancin has no effect on the coagulation system in vivo.

5.2 Hypersensitivity

Serious hypersensitivity reactions, including anaphylaxis, have been reported with the use of oritavancin products, including KIMYRSA. If an acute hypersensitivity reaction occurs during KIMYRSA infusion, discontinue KIMYRSA immediately and institute appropriate supportive care. Before using KIMYRSA, inquire carefully about previous hypersensitivity reactions to glycopeptides. Due to the possibility of cross-sensitivity, carefully monitor for signs of hypersensitivity during KIMYRSA infusion in patients with a history of glycopeptide allergy. In the Phase 3 ABSSSI clinical trials, the median onset of hypersensitivity reactions in oritavancin-treated patients was 1.2 days and the median duration of these reactions was 2.4 days [see *Adverse Reactions (6.1)*].

5.3 Infusion Related Reactions

Infusion related reactions have been reported with the glycopeptide class of antimicrobial agents, including oritavancin products (e.g. KIMYRSA), including flushing of the upper body, urticaria, pruritus and/or rash [see *Adverse Reactions (6.1)*]. Infusion reactions characterized by chest pain, back pain, chills and tremor have been observed with the use of oritavancin, including after the administration of more than one dose of oritavancin during a single course of therapy.

Stopping or slowing the infusion may result in cessation of these reactions. The safety and effectiveness of more than one dose of KIMYRSA during a single course of therapy have not been established [see *Dosage and Administration (2.2)*].

5.4 *Clostridioides difficile*-associated Diarrhea

Clostridioides difficile-associated diarrhea (CDAD) has been reported for nearly all systemic antibacterial drugs, including oritavancin products (e.g. KIMYRSA), and may range in severity from mild diarrhea to fatal colitis. Treatment with antibacterial agents alters the normal flora of the colon and may permit overgrowth of *C. difficile*.

C. difficile produces toxins A and B which contribute to the development of CDAD.

Hypertoxin-producing strains of *C. difficile* cause increased morbidity and mortality, as these infections can be refractory to antibacterial therapy and may require colectomy. CDAD must be considered in all patients who present with diarrhea following antibacterial use. Careful medical history is necessary because CDAD has been reported to occur more than 2 months after the administration of antibacterial agents.

If CDAD is suspected or confirmed, antibacterial use not directed against *C. difficile* may need to be discontinued. Appropriate fluid and electrolyte management, protein supplementation, antibacterial treatment of *C. difficile*, and surgical evaluation should be instituted as clinically indicated.

5.5 Potential Risk of Bleeding with Concomitant Use of Warfarin

Oritavancin has been shown to artificially prolong prothrombin time (PT) and international normalized ratio (INR) for up to 12 hours, making the monitoring of the anticoagulation effect of warfarin unreliable up to 12 hours after an oritavancin dose [see *Warnings and Precautions* (5.1)].

Patients should be monitored for bleeding if concomitantly receiving KIMYRSA and warfarin [see *Drug Interactions* (7.1)].

5.6 Osteomyelitis

In Phase 3 ABSSSI clinical trials, more cases of osteomyelitis were reported in the oritavancin treated arm than in the vancomycin-treated arm. Monitor patients treated with KIMYRSA for signs and symptoms of osteomyelitis. If osteomyelitis is suspected or diagnosed, institute appropriate alternate antibacterial therapy [see *Adverse Reactions* (6.1)].

5.7 Development of Drug Resistant Bacteria

Prescribing KIMYRSA in the absence of a proven or strongly suspected bacterial infection or a prophylactic indication is unlikely to provide benefit to the patient and increases the risk of the development of drug-resistant bacteria [see *Patient Counseling Information* (17)].

6 ADVERSE REACTIONS

The following adverse reactions are also discussed in the Warnings and Precautions section of labeling:

Hypersensitivity Reactions [see *Warnings and Precautions* (5.2)]

Infusion Related Reactions [see *Warnings and Precautions* (5.3)]

Clostridioides difficile-associated Diarrhea [see *Warnings and Precautions* (5.4)]

Osteomyelitis [see *Warnings and Precautions* (5.6)]

6.1 Clinical Trials Experience

Because clinical trials are conducted under widely varying conditions, adverse reaction rates observed in the clinical trials of oritavancin products cannot be directly compared to rates in the clinical trials of another drug and may not reflect the rates observed in practice.

The safety of KIMYRSA has been established from adequate and well-controlled trials of another oritavancin product, ORBACTIV (hereinafter referred to as oritavancin), in patients with ABSSSI, and a study of KIMYRSA in patients with ABSSSI.

Oritavancin has been evaluated in two, double-blind, controlled ABSSSI clinical trials, which included 976 adult patients treated with a single 1,200 mg intravenous dose of oritavancin and 983 patients treated with intravenous vancomycin for 7 to 10 days. The median age of patients treated with oritavancin was 45.6 years, ranging between 18 and 89 years of age with 8.8% ≥65 years of age. Patients treated with oritavancin were predominantly male (65.4%), 64.4%

were Caucasian, 5.8% were African American, and 28.1% were Asian. Safety was evaluated for up to 60 days after dosing.

In the pooled ABSSSI clinical trials, serious adverse reactions were reported in 57/976 (5.8%) patients treated with oritavancin and 58/983 (5.9%) treated with vancomycin. The most commonly reported serious adverse reaction was cellulitis in both treatment groups: 11/976 (1.1%) in oritavancin and 12/983 (1.2%) in the vancomycin arms, respectively.

The most commonly reported adverse reactions ($\geq 3\%$) in patients receiving a single 1,200 mg dose of oritavancin in the pooled ABSSSI clinical trials were: headache, nausea, vomiting, limb and subcutaneous abscesses, and diarrhea.

In the pooled ABSSSI clinical trials, oritavancin was discontinued due to adverse reactions in 36/976 (3.7%) of patients; the most common reported reactions leading to discontinuation were cellulitis (4/976, 0.4%) and osteomyelitis (3/976, 0.3%).

Table 1 provides selected adverse reactions occurring in $\geq 1.5\%$ of patients receiving oritavancin in the pooled ABSSSI clinical trials. There were 540 (55.3%) patients in the oritavancin arm and 559 (56.9%) patients in the vancomycin arm, who reported ≥ 1 adverse reaction.

Table 1: Incidence of Selected Adverse Reactions Occurring in $\geq 1.5\%$ of Patients Receiving Oritavancin in the Pooled ABSSSI Clinical Trials

Adverse Reactions	Oritavancin N=976 (%)	Vancomycin N=983 (%)
Gastrointestinal disorders		
Diarrhea	36 (3.7)	32 (3.4)
Nausea	97 (9.9)	103 (10.5)
Vomiting	45 (4.6)	46 (4.7)
Nervous system disorders		
Dizziness	26 (2.7)	26 (2.6)
Headache	69 (7.1)	66 (6.7)
General disorders and administration		
Infusion site phlebitis	24 (2.5)	15 (1.5)
Infusion site reaction	19 (1.9)	34 (3.5)
Infections and infestations		
Abscess (limb and subcutaneous)	37 (3.8)	23 (2.3)
Investigations		
Alanine aminotransferase increased	27 (2.8)	15 (1.5)
Aspartate aminotransferase increased	18 (1.8)	15 (1.5)
Cardiac disorders		
Tachycardia	24 (2.5)	11 (1.1)

The following selected adverse reactions were reported in oritavancin-treated patients at a rate of less than 1.5%:

Blood and lymphatic system disorders: anemia, eosinophilia

General disorders and administration site conditions: infusion site erythema, extravasation, induration, pruritus, rash, edema peripheral

Immune system disorders: hypersensitivity

Infections and infestations: osteomyelitis

Investigations: total bilirubin increased, hyperuricemia

Metabolism and nutrition disorders: hypoglycemia

Musculoskeletal and connective tissue disorders: tenosynovitis, myalgia

Respiratory, thoracic and mediastinal disorders: bronchospasm, wheezing

Skin and subcutaneous tissue disorders: urticaria, angioedema, erythema multiforme, pruritus, leucocytoclastic vasculitis, rash.

KIMYRSA has been evaluated in a randomized, open-label, multi-center ABSSSI study which included 50 adult patients treated with a single 1,200 mg intravenous dose of KIMYRSA administered by intravenous infusion over 1 hour, and 52 patients treated with a single 1,200 mg intravenous dose of oritavancin administered by intravenous infusion over 3 hours.

Selected adverse reactions occurring in ≥ 2 patients receiving either KIMYRSA or oritavancin in the open-label, multi-center ABSSSI study were diarrhea, nausea, vomiting, hypersensitivity, pruritus, chills, headache and pyrexia.

6.2 Immunogenicity

There is potential for immunogenicity following administration of oritavancin products, including KIMYRSA. The detection of antibody formation is highly dependent on the sensitivity and specificity of the assay. Because several factors in an assay may influence the observed incidence of antibody positivity, comparison of the incidence of antibodies to oritavancin in the studies described below with the incidence of antibodies in other studies or to other products may be misleading.

Positive indirect and direct antiglobulin tests (IAT/DAT) were noted with the administration of KIMYRSA and oritavancin in studies with healthy subjects and patients with ABSSSI. In a randomized, open-label, multi-center ABSSSI study, positive antiglobulin tests were reported in 9.6% (5/52) of subjects who received oritavancin and 2% (1/50) of subjects who received KIMYRSA. Oritavancin-dependent RBC antibodies were detected when tested in the presence of drug for three subjects in the oritavancin group.

In a multiple dose study with oritavancin in healthy volunteers, 90% (9/10) of subjects had a positive IAT 14 days after the second infusion.

In a healthy volunteer study, 66% (22/32) of subjects receiving KIMYRSA had a positive IAT 15 days after receiving dosing and one subject had a positive DAT at 8 days after dosing.

There were no reports of hemolysis in subjects who had positive IAT/DAT. If hemolytic anemia develops following treatment with KIMYRSA provide appropriate care. Positive IAT may interfere with cross-matching before blood transfusion [see *Drug Interactions* (7.2)].

7 DRUG INTERACTIONS

7.1 Effect of KIMYRSA on CYP Substrates

A screening drug-drug interaction study indicated that oritavancin is a nonspecific, weak inhibitor (CYP2C9 and CYP2C19) or inducer (CYP3A4 and CYP2D6) of several CYP isoforms [see *Clinical Pharmacology* (12.3)]. A drug-drug interaction study that assessed the interaction potential of a single 1,200 mg dose of oritavancin on the pharmacokinetics of S-warfarin (CYP2C9 probe substrate) showed no effect of oritavancin on S-warfarin C_{max} or AUC.

Avoid administering KIMYRSA concomitantly with drugs that are predominantly metabolized by one of the affected CYP450 enzymes, as co-administration may increase or decrease concentrations of those drugs. Patients should be closely monitored for signs of toxicity or lack of efficacy if they have been given KIMYRSA while on a potentially affected compound (e.g. patients should be monitored for bleeding if concomitantly receiving KIMYRSA and warfarin).

7.2 Drug-Laboratory Test Interactions

Prolongation of Certain Laboratory Coagulation Tests

KIMYRSA may artificially prolong certain laboratory coagulation tests (see Table 2) by binding to and preventing the action of the phospholipid reagents which activate coagulation in commonly used laboratory coagulation tests [see *Contraindications* (4.1) and *Warnings and Precautions* (5.1, 5.5)]. For patients who require monitoring of anticoagulation effect within the indicated time after KIMYRSA dosing, a non-phospholipid dependent coagulation test such as a Factor Xa (chromogenic) assay or an alternative anticoagulant not requiring aPTT monitoring may be considered.

Oritavancin does not interfere with coagulation in vivo. In addition, oritavancin does not affect tests that are used for diagnosis of Heparin Induced Thrombocytopenia (HIT).

Table 2: Coagulation Tests Affected and Unaffected by Oritavancin

Elevated by Oritavancin	Unaffected by Oritavancin
Prothrombin time (PT) up to 12 hours	Chromogenic Factor Xa Assay
International normalized ratio (INR) up to 12 hours	Thrombin Time (TT)
Activated partial thromboplastin time (aPTT) up to 120 hours	
Activated clotting time (ACT) up to 24 hours	
Silica clot time (SCT) up to 18 hours	
Dilute Russell's viper venom time (DRVVT) up to 72 hours	
D-dimer up to 72 hours	

Positive Indirect and Direct Antiglobulin Tests (IAT/DAT)

Positive IAT/DAT were noted with administration of oritavancin products, including KIMYRSA, in studies with healthy volunteers and patients with ABSSSI. Positive IAT may interfere with cross-matching before blood transfusion [*see Adverse Reactions (6.2)*].

8 USE IN SPECIFIC POPULATIONS

8.1 Pregnancy

Risk Summary

There are no available data on KIMYRSA use in pregnant women to evaluate for a drug-associated risk of major birth defects, miscarriage or adverse maternal or fetal outcomes. In animal reproduction studies, no effects on embryo-fetal development or survival were observed in pregnant rats or rabbits treated at the highest doses throughout organogenesis with intravenous oritavancin, at doses equivalent to 25% of the single clinical dose of 1,200 mg (*see Data*).

The estimated background risk of major birth defects and miscarriage for the indicated population is unknown. All pregnancies have a background risk of birth defect, loss, or other adverse outcomes. In the U.S. general population, the estimated background risk of major birth defects and miscarriage in clinically recognized pregnancies is 2% to 4% and 15% to 20%, respectively.

Data

Animal Data

Reproduction studies performed in rats and rabbits have revealed no evidence of harm to the fetus due to oritavancin at the highest doses administered throughout organogenesis, 30 mg/kg/day (gestation days 6-17) and 15 mg/kg/day (gestation days 7-19), respectively. Those doses would be equivalent to a human dose of 300 mg, or 25% of the single clinical dose of 1,200 mg. Higher doses were not evaluated in nonclinical developmental and reproductive toxicology studies.

8.2 Lactation

Risk Summary

There are no data on the presence of oritavancin in human milk, the effects on the breastfed-child, or the effects on milk production. Oritavancin is present in the breast milk of rats (*see Data*). When a drug is present in animal milk, it is likely that the drug will be present in human milk.

The developmental and health benefits of breastfeeding should be considered along with the mother's clinical need for KIMYRSA and any potential adverse effects on the breast-fed child from KIMYRSA or from the underlying maternal condition.

Data

Following a single intravenous infusion in lactating rats, radio-labeled [^{14}C]-oritavancin was excreted in milk and absorbed by nursing pups.

8.4 Pediatric Use

Safety and effectiveness of KIMYRSA in pediatric patients (younger than 18 years of age) have not been established.

8.5 Geriatric Use

The pooled Phase 3 ABSSSI clinical trials of oritavancin did not include sufficient numbers of subjects aged 65 and older to determine whether they respond differently from younger subjects. Other reported clinical experience has not identified differences in responses between the elderly and younger patients, but greater sensitivity of some older individuals cannot be ruled out.

8.6 Renal Impairment

No dosage adjustment of KIMYRSA is needed in patients with mild or moderate renal impairment [see *Clinical Pharmacology* (12.3)]. The pharmacokinetics of KIMYRSA in severe renal impairment have not been evaluated. Oritavancin is not removed from blood by hemodialysis.

8.7 Hepatic Impairment

No dosage adjustment of KIMYRSA is needed in patients with mild or moderate hepatic impairment. The pharmacokinetics of KIMYRSA in patients with severe hepatic insufficiency has not been studied [see *Dosage and Administration* (2.2), *Clinical Pharmacology* (12.3)].

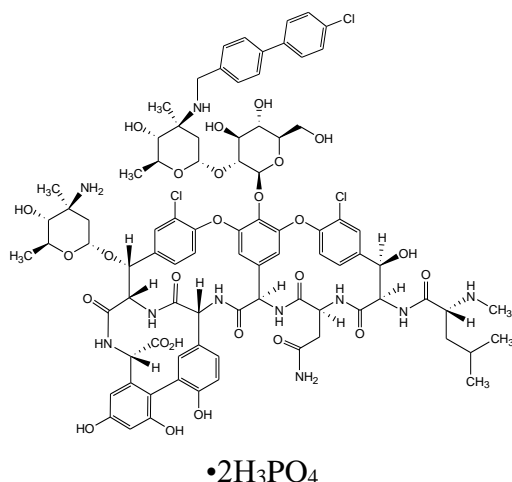
10 OVERDOSAGE

Based on an in vitro hemodialysis study, KIMYRSA is unlikely to be removed from blood by hemodialysis. In the event of overdose, supportive measures should be taken.

11 DESCRIPTION

KIMYRSA (oritavancin) for injection contains oritavancin diphosphate, a semisynthetic lipoglycopeptide antibacterial drug for intravenous infusion.

The chemical name for oritavancin is [4''R]-22-*O*-(3-amino-2,3,6-trideoxy-3-*C*-methyl- α -L-*arabino*-hexopyranosyl)-*N*3''-[(4'-chloro[1,1'-biphenyl]-4-yl)methyl] vancomycin phosphate [1:2] [salt]. The empirical formula of oritavancin diphosphate is $\text{C}_{86}\text{H}_{97}\text{N}_{10}\text{O}_{26}\text{Cl}_3 \cdot 2\text{H}_3\text{PO}_4$ and the molecular weight is 1989.09. The chemical structure is represented below:



KIMYRSA for injection is supplied as a sterile white to off-white or pink lyophilized powder in a single-dose clear glass vial that contains 1,200 mg of oritavancin (equivalent to 1331.16 mg oritavancin diphosphate) and the following inactive ingredients: hydroxypropyl- β -cyclodextrin (HP β CD) (2400 mg), mannitol (800 mg) and phosphoric acid or sodium hydroxide (to adjust pH 4.0 to 6.0).

The vial is reconstituted with sterile water for injection and further diluted with 0.9% sodium chloride injection or 5% dextrose in sterile water (D5W) for intravenous infusion. Both the reconstituted solution and the diluted solution for infusion should be a clear, colorless to pink solution, free of visible particles [see *Dosage and Administration* (2.3)].

12 CLINICAL PHARMACOLOGY

12.1 Mechanism of Action

Oritavancin is an antibacterial drug [see *Microbiology* (12.4)].

12.2 Pharmacodynamics

The antimicrobial activity of oritavancin appears to correlate with the ratio of area under the concentration-time curve to minimal inhibitory concentration (AUC/MIC) based on animal models of infection. The AUC from time zero to 72 hours correlates with antimicrobial activity in both preclinical and clinical studies.

Exposure-response analyses from both preclinical and clinical studies support the treatment of clinically relevant Gram-positive microorganisms (e.g. *S. aureus* and *S. pyogenes*) causative of ABSSSI with a single 1,200 mg dose of oritavancin.

Cardiac Electrophysiology

In a thorough QTc study of 135 healthy subjects at a dose 1.3 times the 1,200 mg recommended dose, oritavancin did not prolong the QTc interval to any clinically relevant extent.

12.3 Pharmacokinetics

The mean (\pm SD) pharmacokinetic parameters of oritavancin products (KIMYRSA and oritavancin) in patients with ABSSSI are presented in Table 3.

Table 3: Mean (\pm SD) Pharmacokinetic Parameters following a single 1,200 mg dose of KIMYRSA by intravenous infusion over 1 hour (N= 50) and Oritavancin by intravenous infusion over 3 hours (N=50) in Patients with ABSSSI

Pharmacokinetic Parameter	KIMYRSA (1 hour) Mean (\pm SD)	Oritavancin (3 hour) Mean (\pm SD)
C _{max} (μ g/mL)	148 (\pm 43.0)	112 (\pm 34.5)
AUC ₀₋₇₂ (h• μ g /mL)	1460 (\pm 511)	1470 (\pm 582)

C_{max}, Maximum plasma concentration; AUC₀₋₇₂, Area under the plasma concentration-time curve from time zero to 72 hours; SD, Standard deviation.

Oritavancin exhibits linear pharmacokinetics at a dose up to 1,200 mg. The mean, population-predicted oritavancin concentration-time profile displays a multi-exponential decline with a long terminal plasma half-life.

Distribution

Oritavancin is approximately 85% bound to human plasma proteins.

Based on population PK analysis, the population mean total volume of distribution is estimated to be approximately 87.6 L, indicating oritavancin is extensively distributed into the tissues.

Exposures of oritavancin in skin blister fluid were approximately 20% of those in plasma (AUC₀₋₂₄) after single 800 mg dose in healthy subjects.

Metabolism/Excretion

Non-clinical studies including in vitro human liver microsome studies indicated that oritavancin is not metabolized. No mass balance study has been conducted in humans. In humans, oritavancin is slowly excreted unchanged in feces and urine with less than 1% and 5% of the dose recovered in feces and urine, respectively, after 2 weeks of collection.

Oritavancin has a terminal half-life of approximately 245 hours and a clearance of 0.445 L/h based on population pharmacokinetic analyses.

Specific Populations

No dosage adjustments of KIMYRSA are required for patients with mild to moderate renal or mild to moderate hepatic impairment or other subpopulations including age, gender, race and weight.

Renal Impairment

The pharmacokinetics of oritavancin was examined in the Phase 3 ABSSSI trials in patients with normal renal function, CrCL \geq 80 mL/min (n=238), mild renal impairment, CrCL 50-79 mL/min (n=48), and moderate renal impairment, CrCL 30-49 mL/min (n=11). Population pharmacokinetic analysis indicated that mild to moderate renal impairment had no clinically

relevant effect on the exposure of oritavancin. No dedicated studies in dialysis patients have been conducted.

The solubilizer HP β CD is excreted in urine. Clearance of HP β CD may be reduced in patients with renal impairment. The clinical significance of this finding is unknown.

Dosage adjustment of KIMYRSA is not needed in patients with mild or moderate renal impairment. The pharmacokinetics of oritavancin in patients with severe renal impairment have not been evaluated.

Hepatic Impairment

The pharmacokinetics of oritavancin were evaluated in study of subjects with moderate hepatic impairment (Child-Pugh Class B) (n=20) and compared with healthy subjects (n=20) matched for gender, age and weight. There were no relevant changes in pharmacokinetics of oritavancin in subjects with moderate hepatic impairment.

Dosage adjustment of KIMYRSA is not needed in patients with mild or moderate hepatic impairment. The pharmacokinetics of oritavancin in patients with severe hepatic insufficiency has not been studied.

Age, Gender, Weight and Race

Population pharmacokinetic analysis from the Phase 3 ABSSSI trials in patients indicated that gender, age, weight or race had no clinically relevant effect on the exposure of oritavancin. No dosage adjustment of KIMYRSA is warranted in these subpopulations.

Drug Interactions

In vitro studies with human liver microsomes showed that oritavancin inhibited the activities of cytochrome P450 (CYP) enzymes 1A2, 2B6, 2D6, 2C9, 2C19, and 3A4. The observed inhibition of multiple CYP isoforms by oritavancin in vitro is likely to be reversible and noncompetitive. In vitro studies indicate that oritavancin is neither a substrate nor an inhibitor of the efflux transporter P-glycoprotein (P-gp).

Drugs that Inhibit or Induce CYP450 Enzymes

A screening drug-drug interaction study was conducted in healthy volunteers (n=16) evaluating the concomitant administration of a single 1,200 mg dose of oritavancin with probe substrates for several CYP450 enzymes. The results showed that oritavancin is a weak inducer of CYP3A4 (a decrease of 18% in the mean AUC of midazolam) and CYP2D6 (decrease of 31% in the ratio of dextromethorphan to dextrophan concentrations in the urine after administration of dextromethorphan). Oritavancin was also a weak inhibitor of CYP2C19 (increase of 15% in the ratio of omeprazole to 5-OH-omeprazole concentrations in the plasma after administration of omeprazole) and also showed to be a weak inhibitor of CYP2C9 (with an increase of 31% in the mean AUC of warfarin) [see *Warnings and Precautions* (5.5), and *Drug Interactions* (7.1)].

In the screening drug-drug interaction study, co-administration of oritavancin resulted in an increase of 18% in the ratio of 1-methylxanthine + 1 methylurate + 5-acetylamino-6-formylamino-3-methyluracil (1X + 1U + AFMU) to 1,7-dimethylurate (17U) concentrations in the urine after administration of caffeine (CYP1A2 probe substrate), and an increase of 16% in the ratio of AFMU to (1X + 1U) concentrations in the urine after administration of caffeine (N-

Acetyltransferase- 2 probe substrate). Co-administration of oritavancin did not change the mean systemic exposure of caffeine metabolite (Xanthine oxidase probe substrate).

A study to assess the drug-drug interaction potential of a single 1,200 mg dose of oritavancin on the pharmacokinetics of S-warfarin following a single dose was conducted in 36 healthy subjects. S-warfarin pharmacokinetics were evaluated following a single dose of warfarin 25 mg given alone, or administered at the start, 24, or 72 hours after a single 1,200 mg oritavancin dose. The results showed no effect of oritavancin on S-warfarin C_{max} or AUC.

12.4 Microbiology

KIMYRSA is a semi-synthetic, lipoglycopeptide antibacterial drug. KIMYRSA exerts a concentration-dependent bactericidal activity in vitro against *S. aureus*, *S. pyogenes*, and *E. faecalis*.

Mechanism of Action

Oritavancin has three mechanisms of action: (i) inhibition of the transglycosylation (polymerization) step of cell wall biosynthesis by binding to the stem peptide of peptidoglycan precursors; (ii) inhibition of the transpeptidation (crosslinking) step of cell wall biosynthesis by binding to the peptide bridging segments of the cell wall; and (iii) disruption of bacterial membrane integrity, leading to depolarization, permeabilization, and cell death. These multiple mechanisms contribute to the concentration-dependent bactericidal activity of oritavancin.

Resistance

In serial passage studies, resistance to oritavancin was observed in isolates of *S. aureus* and *E. faecalis*. Resistance to oritavancin was not observed in clinical studies.

Interaction with Other Antimicrobial Agents

In in vitro studies, oritavancin exhibits synergistic bactericidal activity in combination with gentamicin, moxifloxacin or rifampicin against isolates of methicillin-susceptible *S. aureus* (MSSA), with gentamicin or linezolid against isolates of heterogeneous vancomycin-intermediate *S. aureus* (hVISA), VISA, and vancomycin-resistant *S. aureus* (VRSA), and with rifampin against isolates of VRSA. In vitro studies demonstrated no antagonism between oritavancin and gentamicin, moxifloxacin, linezolid or rifampin.

Antibacterial Activity

Oritavancin has been shown to be active against most isolates of the following microorganisms, both in vitro and in clinical infections [see *Indications and Usage* (1.1)].

Gram-positive Bacteria

Staphylococcus aureus (including methicillin-resistant isolates)

Streptococcus agalactiae

Streptococcus anginosus group (includes *S. anginosus*, *S. intermedius*, and *S. constellatus*)

Streptococcus dysgalactiae

Streptococcus pyogenes

Enterococcus faecalis (vancomycin-susceptible isolates only)

The following in vitro data are available, but their clinical significance is unknown. At least 90 percent of the following bacteria exhibit an in vitro minimum inhibitory concentration (MIC) less than or equal to the susceptible breakpoint for oritavancin against isolates of a similar organism group. However, the efficacy of oritavancin in treating clinical infections due to these bacteria has not been established in adequate and well-controlled clinical trials.

Gram-positive Bacteria

Enterococcus faecium (vancomycin-susceptible isolates only)

Susceptibility Testing Methods

For specific information regarding susceptibility test interpretive criteria and associated test methods and quality control standards recognized by FDA for this drug, please see: <https://www.fda.gov/STIC>.

13 NONCLINICAL TOXICOLOGY

13.1 Carcinogenesis, Mutagenesis, Impairment of Fertility

Long term studies in animals have not been conducted to determine the carcinogenic potential of oritavancin.

No mutagenic or clastogenic potential of oritavancin was found in a battery of tests, including an Ames assay, *in vitro* chromosome aberration assay in Chinese hamster ovary cells, *in vitro* forward mutation assay in mouse lymphoma cells and an *in vivo* mouse micronucleus assay.

Oritavancin did not affect the fertility or reproductive performance of male rats (exposed to daily doses up to 30 mg/kg for at least 4 weeks) and female rats (exposed to daily doses up to 30 mg/kg for at least 2 weeks prior to mating). Those daily doses would be equivalent to a human dose of 300 mg, or 25% of clinical dose. Higher doses were not evaluated in nonclinical fertility studies.

14 CLINICAL STUDIES

14.1 Acute Bacterial Skin and Skin Structure Infections (ABSSSI)

A total of 1987 adults with clinically documented ABSSSI suspected or proven to be due to Gram-positive pathogens were randomized into two identically designed, randomized, double-blind, multi-center, multinational, non-inferiority trials (Trial 1 and Trial 2) comparing a single 1,200 mg intravenous dose of oritavancin to intravenous vancomycin (1 g or 15 mg/kg every 12 hours) for 7 to 10 days. The primary analysis population (modified intent to treat, mITT) included all randomized patients who received any study drug. Patients could receive concomitant aztreonam or metronidazole for suspected Gram-negative and anaerobic infection, respectively. Patient demographic and baseline characteristics were balanced between treatment groups. Approximately 64% of patients were Caucasian and 65% were males. The mean age was 45 years and the mean body mass index was 27 kg/m². Across both trials, approximately 60% of

patients were enrolled from the United States and 27% of patients from Asia. A history of diabetes was present in 14% of patients. The types of ABSSSI across both trials included cellulitis/erysipelas (40%), wound infection (29%), and major cutaneous abscesses (31%). Median infection area at baseline across both trials was 266.6 cm². The primary endpoint in both trials was early clinical response (responder), defined as cessation of spread or reduction in size of baseline lesion, absence of fever, and no rescue antibacterial drug at 48 to 72 hours after initiation of therapy.

Table 4 provides the efficacy results for the primary endpoint in Trial 1 and Trial 2 in the primary analysis population.

Table 4: Clinical Response Rates in ABSSSI Trials using Responders^{1,2} at 48-72 Hours after Initiation of Therapy

	Oritavancin n /N (%)	Vancomycin n /N (%)	Difference (95% CI)³
Trial 1	391/475 (82.3)	378/479 (78.9)	3.4 (-1.6, 8.4)
Trial 2	403/503 (80.1)	416/502 (82.9)	-2.7 (-7.5, 2.0)

¹ Cessation of spread or reduction in size of baseline lesion, absence of fever (<37.7°C) and no rescue antibacterial drug at 48 to 72 hours.

² Patients who died at 48 to 72 hours, after initiation of therapy or who had increase in lesion size at 48 to 72 hours, after initiation of therapy or who used non-study antibacterial therapy during first 72 hours or who had an additional, unplanned, surgical procedure or who had missing measurements during the first 72 hours from initiation of study drug were classified as non-responders.

³ 95% CI based on the Normal approximation to Binomial distribution.

A key secondary endpoint in these two ABSSSI trials evaluated the percentage of patients achieving a 20% or greater reduction in lesion area from baseline at 48-72 hours after initiation of therapy. Table 5 summarizes the findings for this endpoint in the two ABSSSI trials.

Table 5: Clinical Response Rates¹ in ABSSSI Trials using Reduction in Lesion Area of 20% or Greater at 48-72 Hours after Initiation of Therapy

	Oritavancin n /N (%)	Vancomycin n /N (%)	Difference (95% CI)²
Trial 1	413/475 (86.9)	397/479 (82.9)	4.1 (-0.5, 8.6)
Trial 2	432/503 (85.9)	428/502 (85.3)	0.6 (-3.7, 5.0)

¹ Patients who died at 48 to 72 hours, after initiation of therapy or who had increase in lesion size at 48 to 72 hours, after initiation of therapy or who used non-study antibacterial therapy during first 72 hours or who had an additional, unplanned, surgical procedure or who had missing measurements during the first 72 hours from initiation of study drug were classified as non-responders.

² 95% CI based on the Normal approximation to Binomial distribution.

Another secondary efficacy endpoint in the two trials was investigator-assessed clinical success at post therapy evaluation at Day 14 to 24 (7 to 14 days from end of blinded therapy). A patient was categorized as a clinical success if the patient experienced a complete or nearly complete resolution of baseline signs and symptoms related to primary ABSSSI site (erythema, induration/edema, purulent drainage, fluctuance, pain, tenderness, local increase in heat/warmth) such that no further treatment with antibacterial drugs was needed.

Table 6 summarizes the findings for this endpoint in the mITT and clinically evaluable population in these two ABSSSI trials. Note that there are insufficient historical data to establish the magnitude of drug effect for antibacterial drugs compared with placebo at the post therapy visits. Therefore, comparisons of oritavancin to vancomycin based on clinical success rates at these visits cannot be utilized to establish non-inferiority conclusions.

Table 6: Clinical Success Rates¹ in ABSSSI Trials at the Follow-Up Visit (7-14 days after end of therapy)

	Oritavancin n /N (%)	Vancomycin n /N (%)	Difference (95% CI) ²
Trial 1			
mITT ³	378/475 (79.6)	383/479 (80.0)	-0.4 (-5.5, 4.7)
CE ³	362/394 (91.9)	370/397 (93.2)	-1.3 (-5.0, 2.3)
Trial 2			
mITT ³	416/503 (82.7)	404/502 (80.5)	2.2 (-2.6, 7.0)
CE ³	398/427 (93.2)	387/408 (94.9)	-1.6 (-4.9, 1.6)

¹ Clinical success was defined if the patient experienced a complete or nearly complete resolution of baseline signs and symptoms as described above.

² 95% CI based on the Normal approximation to Binomial distribution.

³ mITT population consisted of all randomized patients who received study drug; CE population consisted of all mITT patients who did not have violations of inclusion and exclusion criteria, completed treatment and had investigator assessment at the Follow-Up Visit.

Outcomes by Baseline Pathogen: Table 7 shows outcomes in patients with an identified baseline pathogen in the microbiological Intent-to-Treat (microITT) population in a pooled analysis of Trial 1 and Trial 2. The outcomes shown in the table are clinical response rates at 48 to 72 hours and clinical success rates at follow-up study day 14 to 24.

Table 7: Outcomes by Baseline Pathogen (microITT)

	At 48-72 hours				Study day 14 to 24	
	Early Clinical Responder ¹		≥ 20% reduction in lesion size ²		Clinical Success ³	
Pathogen ⁴	Oritavancin n/N (%)	Vancomycin n/N (%)	Oritavancin n/N (%)	Vancomycin n/N (%)	Oritavancin n/N (%)	Vancomycin n/N (%)
<i>Staphylococcus aureus</i>	388/472 (82.2)	395/473 (83.5)	421/472 (89.2)	407/473 (86.0)	390/472 (82.6)	398/473 (84.1)
Methicillin-susceptible	222/268 (82.8)	233/272 (85.7)	231/268 (86.2)	232/272 (85.3)	220/268 (82.1)	229/272 (84.2)
Methicillin-resistant	166/204 (81.4)	162/201 (80.6)	190/204 (93.1)	175/201 (87.1)	170/204 (83.3)	169/201 (84.1)
<i>Streptococcus pyogenes</i>	21/31 (67.7)	23/32 (71.9)	24/31 (77.4)	24/32 (75.0)	25/31 (80.6)	23/32 (71.9)
<i>Streptococcus agalactiae</i>	7/8 (87.5)	12/12 (100.0)	8/8 (100.0)	12/12 (100.0)	7/8 (87.5)	11/12 (91.7)
<i>Streptococcus dysgalactiae</i>	7/9 (77.8)	6/6 (100.0)	6/9 (66.7)	5/6 (83.3)	7/9 (77.8)	3/6 (50.0)
<i>Streptococcus anginosus</i> group	28/33 (84.8)	40/45 (88.9)	29/33 (87.9)	42/45 (93.3)	25/33 (75.8)	38/45 (84.4)
<i>Enterococcus faecalis</i>	11/13 (84.6)	10/12 (83.3)	10/13 (76.9)	8/12 (66.7)	8/13 (61.5)	9/12 (75.0)

¹ Early clinical response defined as a composite of the cessation of spread or reduction in size of baseline lesion, absence of fever and no rescue antibacterial drug at 48-72 hours.

² Patients achieving a 20% or greater reduction in lesion area from baseline at 48-72 hours after initiation of therapy.

³ Clinical success was defined if the patient experienced a complete or nearly complete resolution of baseline signs and symptoms as described above.

⁴ Baseline bacteremia in the oritavancin arm with relevant microorganisms causing ABSSSI included four subjects with MSSA and seven subjects with MRSA. Eight of these eleven subjects were responders at 48 to 72 hours after initiation of therapy.

16 HOW SUPPLIED/STORAGE AND HANDLING

16.1 How Supplied/Storage

KIMYRSA is supplied as a sterile white to off-white or pink lyophilized powder in single-dose clear glass vials containing 1,200 mg of oritavancin. One vial is packaged in a carton to supply a single 1,200 mg dose treatment (NDC 70842-225-01).

KIMYRSA vials should be stored at 20°C to 25°C (68°F to 77°F); excursions permitted to 15°C to 30°C (59°F to 86°F) [see USP, Controlled Room Temperature (CRT)].

17 PATIENT COUNSELING INFORMATION

Allergic Reactions

Patients should be advised that allergic reactions, including serious allergic reactions, could occur and that serious reactions require immediate treatment. They should inform their healthcare provider about any previous hypersensitivity reactions to oritavancin products, other glycopeptides (vancomycin, telavancin, or dalbavancin) or other allergens.

Diarrhea

Patients should be advised that diarrhea is a common problem caused by antibacterial drugs including KIMYRSA, which usually resolves when the drug is discontinued. Sometimes, frequent watery or bloody diarrhea may occur and may be a sign of a more serious intestinal infection. If severe watery or bloody diarrhea develops, patients should contact their healthcare provider.

Development of Antibacterial Resistance

Patients should be counseled that antibacterial drugs including KIMYRSA should only be used to treat bacterial infections. They do not treat viral infections (e.g. the common cold). When KIMYRSA is prescribed to treat a bacterial infection, patients should be told that although it is common to feel better early in the course of therapy, the medication should be taken exactly as directed. Skipping doses or not completing the full course of therapy may (1) decrease the effectiveness of the immediate treatment and (2) increase the likelihood that bacteria will develop resistance and will not be treatable by KIMYRSA or other antibacterial drugs in the future.

Marketed By:

Melinta Therapeutics, LLC
Lincolnshire, IL 60069 USA

©2021 Melinta Therapeutics, LLC. All rights reserved.

MEL100-R001